

Panel regulator PM52^{exact}-2

spectro lab



Panel regulator PM52^{exact}-2



Example:
PM52^{exact}
panel mounted

Product features

- Brass (chrome plated) panel pressure regulator for panel and panel surface mounting
- Extremely stable outlet pressure by applied extremely accurate Technology "exact" and anti- vibration device
- For non-corrosive gases and gas mixtures up to quality 6.0
- 2 ports for flexible and individual configuration
- Suitable for inlet pressures up to 300 bar
- Max. outlet pressures 1.5 up to 20 bar
- Light weight
- Compact design
- Metal-to-metal seal to atmosphere
- Suitable for ECD-applications
- Pressure regulator can be evacuated
- Central filter
- Approved for use with oxygen
- Simple outlet pressure limitation by handwheel
- Easy to install
- New laboratory-style design
- Ergonomically designed

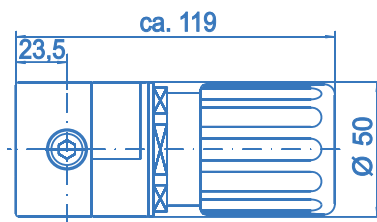
exact = extremely accurate technology

Technical data

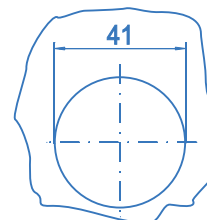
Type	single-stage EXACT
Inlet pressure P₁	max. 300 bar
Outlet pressure P₂	1.5 / 4 / 10 / 20 bar
Materials	
Body regulator:	chrome plated brass
Valve seat:	Hytrel (P ₁ > 50 bar: PA)
Diaphragm:	Hastelloy C276
Soft goods:	EPDM
Filter:	Sintered SS 316L
In- and outlets	1/4" NPT-F
Temperature range	-30°C to +60°C
Leak rate (to atmosphere)	1x10 ⁻⁸ mbar l/s He
(via seat)	1x10 ⁻⁶ mbar l/s He
Flow capacity	C _v =0.15
Weight	1.0 kg

Dimensions
PM52^{exact}-2

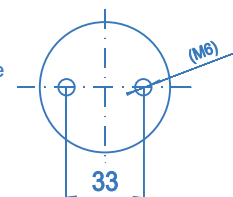
Side view



Bore template
for panel
mounting



Fixing holes
for panel surface
mounting



Panel regulator PM52^{exact}-2

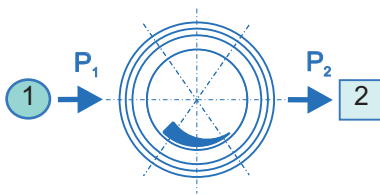
spectron lab

Ordering information:

Panel regulator PM52^{exact}-2

In- / outlets

CM	1/4	- 1/8" / 1/4" / 1/2"	- OD compression fitting (brass)
CM	6	- 3/6 / 8 / 10 / 12	mm compression fitting (brass)
CE	1/4	- 1/8" / 1/4" / 1/2"	- OD compression fitting (stainless steel)
CE	6	- 3 / 6 / 8 / 10 / 12	mm compression fitting (stainless steel)
0			- 1/4"-NPT-F (port only)



port selection

PM52 - 2 - 300 - 10 - 1 - 2 - N2

Inlet pressure P_1

100	- max. 100 bar
200	- max. 200 bar
300	- max. 300 bar

Outlet pressure P_2

1,5-	to 1,5 bar
4	- to 4 bar
10	- to 10 bar
20	- to 20 bar

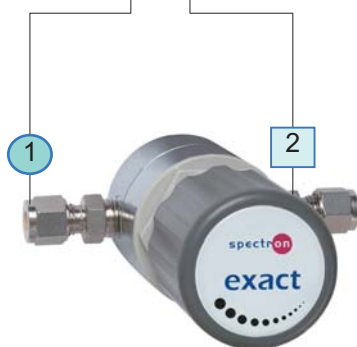
Type of gas

Please specify type of gas (for selection of valve seat materials)

For inlet pressure up to 50 bar and outlet pressure of max. 1,5 or 4 bar please use M51

Ordering example:

PM52-2-300-10-CE6-CE6-N2



Specifications

- SPECTROLAB-components guarantee maximum quality by using high grade materials and a quality assurance program acc. to ISO 9001.
- All parts in the gas wetted surface area are cleaned in an ultrasonic cleaning system (CFC-free) with the special Cleaning process SPECTRO-CLEAN[®] and then baked out.
- SPECTROLAB-components undergo a 100% function- and Helium-leak-test.