

Panel regulator PE52^{exact}-2

spectron



Panel regulator PE52^{exact}-2



Example:
PE52^{exact}
panel mounted

Product features

- Stainless steel panel pressure regulator for panel and panel surface mounting
- Extremely stable outlet pressure by applied extremely accurate technology "exact" and anti-vibration device
- For corrosive, toxic gases and gas mixtures with corrosive components up to quality 6.0
- 2 ports for flexible and individual configuration
- Suitable for inlet pressures up to 300 bar
- Max. outlet pressures 1.5 up to 20 bar
- Light weight
- Compact design
- Metal-to-metal seal to atmosphere
- Suitable for ECD-applications
- Pressure regulator can be evacuated
- Central filter
- Approved for use with oxygen
- Simple outlet pressure limitation by handwheel
- Easy to install
- New laboratory-style design

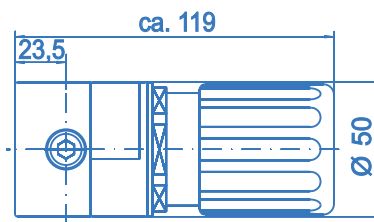
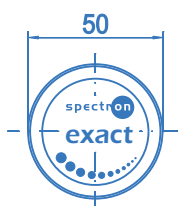
exact = extremely accurate technology

Technical data

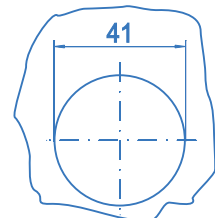
Type	single-stage EXACT
Inlet pressure P₁	max. 300 bar
Outlet pressure P₂	1.5 / 4 / 10 / 20 bar
Materials	
Body regulator:	SS 316L (SS 1.4404)
Valve seat:	PVDF
Diaphragm:	Hastelloy C276
Soft goods:	EPDM
Filter:	Sintered SS 316L
In- and outlets	1/4" NPT-F
Temperature range	-30°C to +60°C
Leak rate (to atmosphere) (via seat)	1x10 ⁻⁸ mbar l/s He 1x10 ⁻⁶ mbar l/s He
Flow capacity	C _v =0.15
Weight	1.0 kg

Dimensions
PE52^{exact}-2

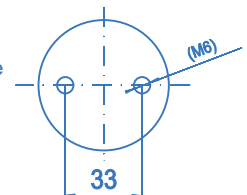
Side view



Bore template
for panel
mounting



Fixing holes
for panel surface
mounting

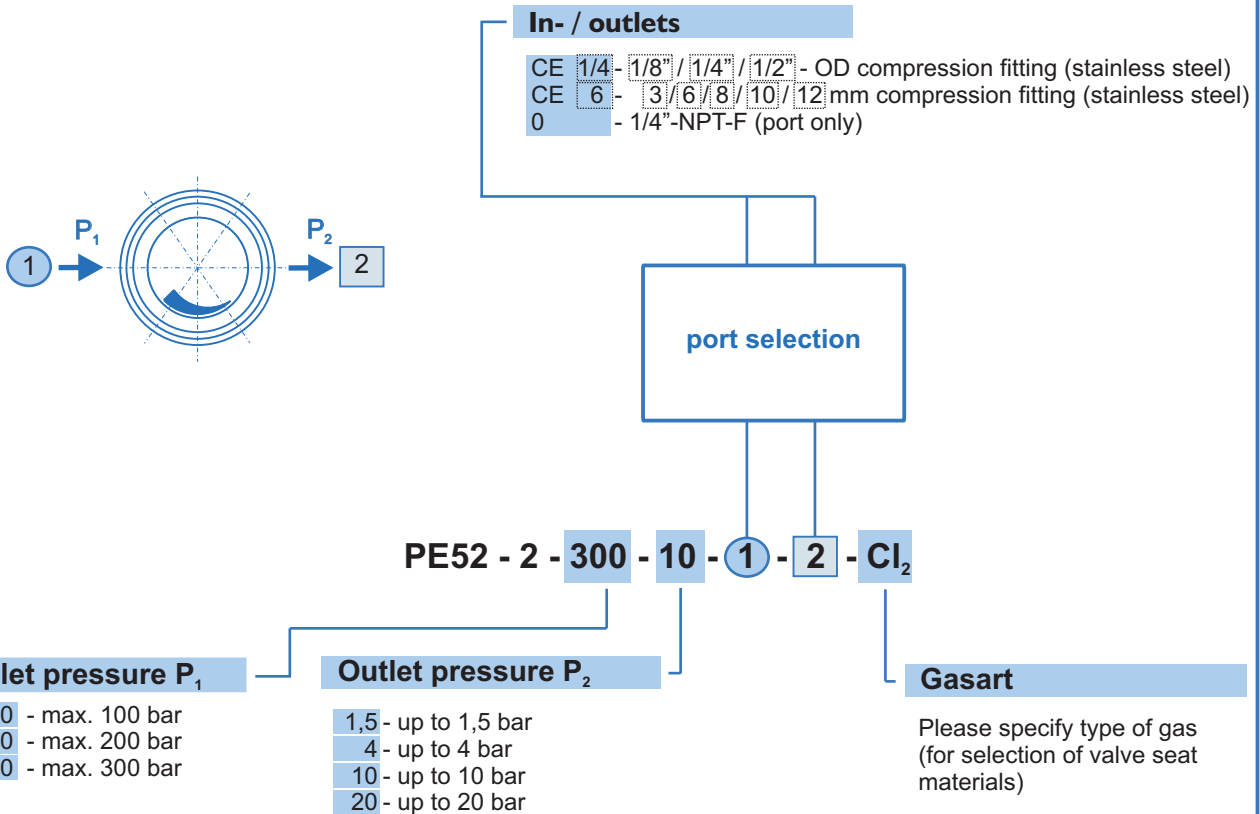


Panel regulator PE52^{exact}-2



Ordering information:

Panel pressure regulator PE52^{exact}-2



For inlet pressure up to 50 bar and outlet pressure of max. 1,5 or 4 bar please use M51

Ordering example:

PE52-2-300-10-CE6-CE6-N2

