

Panel pressure regulator PE51-2

spectro**cem**



Panel pressure regulator PE51-2



Example:
PE51
panel mounted

Product features

- Stainless steel panel pressure regulator for panel and panel surface mounting
- For corrosive, toxic gases and gas mixtures with corrosive components up to quality 6.0
- 2 ports for flexible and individual configuration
- Stable outlet pressure
- Anti-vibration device
- Suitable for inlet pressures up to 300 bar
- Max. outlet pressures 1,5 up to 200 bar *
- Metal-to-metal seal to atmosphere
- Suitable for ECD-applications
- Pressure regulator can be evacuated
- Inlet filter
- Approved for use with oxygen
- Simple outlet pressure limitation by handwheel
- Easy to install
- New laboratory-style design
- Ergonomically designed

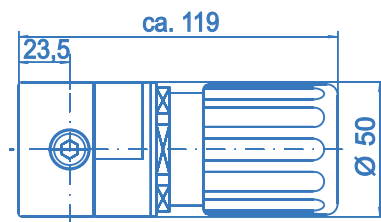
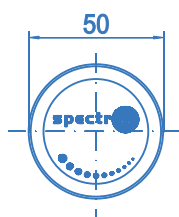
* 1.5 / 4 bar only for inlet pressure \leq 50 bar

Technical data

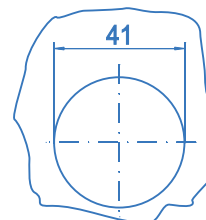
Type	single-stage
Inlet pressure P_1	max. 300 bar
Outlet pressure P_2	1,5 / 4 bar ($P_1 \leq 50$ bar) 10 / 20 / 50 / 100 / 200 bar ($P_1 > 50$ bar)
Materials	
Body regulator:	SS 316L (SS 1.4404)
Valve seat:	PVDF
Diaphragm:	Hastelloy C276
Filter:	Sintered SS 316L
In- and outlets	1/4" NPT-F
Temperature range	-30°C to +60°C
Leak rate (to atmosphere) (via seat)	1×10^{-8} mbar l/s He 1×10^{-6} mbar l/s He
Flow capacity	$C_v = 0.15$
Weight	1.0 kg

Dimensions
PE51-2

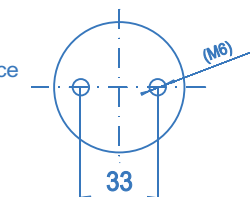
Side view



Bore template
for panel
mounting



Fixing holes
for panel surface
mounting

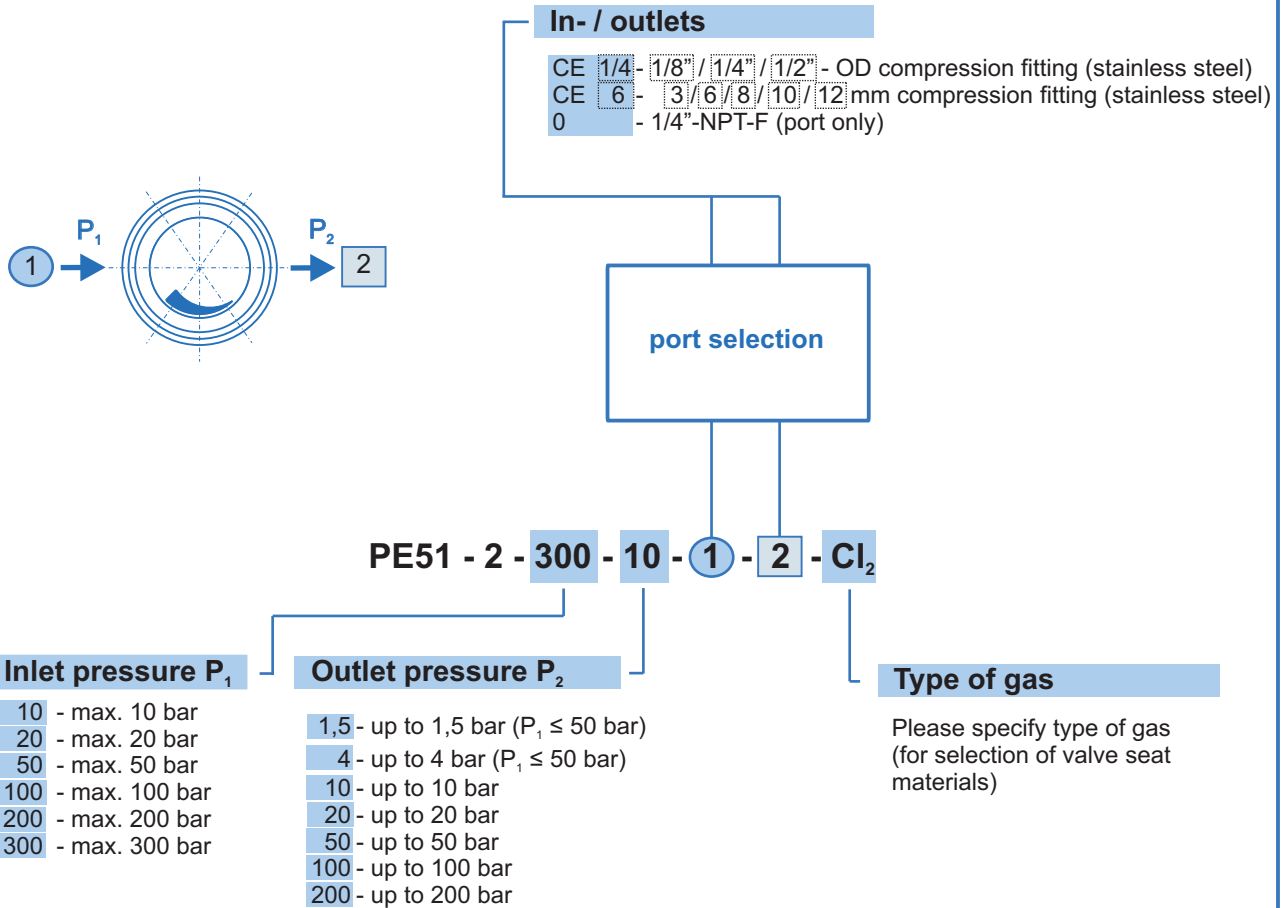


Panel pressure regulator PE51-2



Ordering information:

Panel pressure regulator PE51-2



Ordering example:

PE51-2-300-10-CE6-CE6-N2

